



VMS +

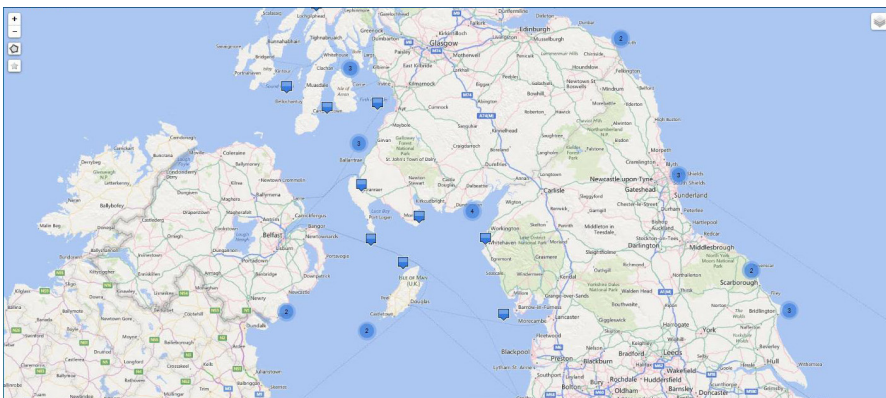
Dual Mode Vessel Monitoring Solution

Benefits

- Monitoring and controlling vessels or assets over air in near real time, remotely with high frequency reporting cost effectively over GPRS or over satellite. No GPRS roaming charges.
- EU VMS compliant meets or exceeds EU Commission Regulation Nos. 2244/2003, 1224/2009 and Commission Implementing Regulation No. 404/2011
- Remote fishing gear monitoring compatible.
- Electronic Log Books compatible
- Safety – alert function
- Travelled routes and distances
- Speed and heading
- Geographical coordinates
- Communication status
- Terminal performance status
- Power source status
- Sensor readings
- Short ASCII messages
- Small size file transfer
- Alerts

Easy To Use

- Global coverage position reporting
- Robust - IP68
- Cost effective messages-Satellite & GPRS
- 256 Encryption
- Geofencing/zones remote over air upgradeable
- Internal rechargeable battery 72 hours
- GPRS / Iridium store & forward.
- Secure - Tamper Alerts function
- BDU with In port function & alert



Specifications

Size Overall (l x b x h)	19 x 18 x 9 cm
Mounting Option	Rail Mount or Uni. Mount
Cover UV and Salt Water Resistant	PMMA/ABS
Operating Temperature	-40 to +65 C
Storage Temperature	-40 to +65 C
Humidity Relative	100%
Working Voltage	12 to 24 Volts DC (8V min to 36V max)
Power Consumption Average Receive	<50mA @ 12V / <25mA @ 24V
Power Consumption During Transmit	<150mA @ 12V / <75mA @ 24V
Backup Battery Optional	(7.4V / 2200mAh)
Serial port I/O	RS-485 / RS-422 (115kbit/sec max)
1 Opto Coupled Digital Input	5 to 24V DC
1 Analog Input	0 to 30V @ 12bit ADC
1 Output Open Collector Protected Mosfet	0.7 Amps / 60V DC (Sink)
Iridium Constellation	True Global Coverage
Frequency	1616 - 1626.5 MHz
Transmission Short Burst Data	TDMA/FDMA
Communication	Direct IP or E-mail
Iridium RX/TX Antenna	Integrated Patch Antenna
GPS	(L1band) Fastrax IT-500
Accuracy	1.8 m
GPS RX Antenna	Integrated Patch

